

# SUPER VERSATILE AVIONICS FOR THE SUPER VERSATILE JET

The next generation flight deck for the Pilatus PC-24  
powered by Honeywell Primus Epic® 2.0



Designed in partnership with Pilatus, the ACE™ integrated flight deck powered by Honeywell's Primus Epic® 2.0 integrated avionics system, provides the PC-24 a sophisticated combination of technology, features and capabilities, to provide the ultimate flight experience and capabilities for the pilot.



### Versatile Access and Performance for the World's First Super Versatile Jet

Offering the best standard aircraft avionics package in class, the PC-24 Advanced Cockpit Environment (ACE) powered by Honeywell's Primus Epic 2.0 integrated avionics, equips the pilot with enhanced situational awareness, efficient workload management, safety systems, and advanced navigation tools.

The latest evolution of the Primus Epic family, the Primus Epic 2.0 integrated avionics system is the foundation for the ACE integrated flight deck, leveraging the latest generation avionics hardware and software capabilities.

Four 12-inch high-performance color LCD displays form the foundation for the pilot's interaction and experience with ACE's array of functions and features. Following extensive development with Pilatus, the displays present synoptics information intuitively to the pilot. The displays offer improved information organization with scalable window views, charts, maps and detailed aircraft system information presented for easier viewing and comprehension.

The four display design encourages good crew resource management (CRM), with tactical information displayed on the pilot's Primary Flight Display (PFD), and strategic information (Systems and Situational Awareness) on the center Multi-Function Displays (MFDs).

The standard package also includes SmartView™ Synthetic Vision System, the most advanced synthetic vision system in any cockpit flying.

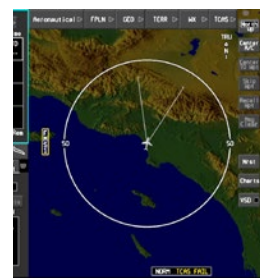
SmartView provides pilots with a seamless and continuous view of their flight path, terrain and navigational environment.

SmartView capabilities and benefits for the pilot:

- **Synthetic Vision** improves situational awareness by enhancing the pilot's mental model of the surrounding environment and improves terrain/ obstacle awareness by enabling early recognition of conflicting terrain and obstacles.
- **Advanced flight path symbology** reduces cockpit workload by allowing pilots to focus on flight symbology on the PFD with less frequent scanning of other instruments to control the flight path directly, and without having to interpret changes in aircraft weight and configuration.

And it gets better – also included is Honeywell's Interactive Navigation (INAV™). The INAV, fully integrated with the suite of ACE sensors, displays traffic, terrain, airspace, airways, airports, navigation aids, and weather. Working in tandem, the PFD and INAV provide a complete strategic and tactical flight planning and control system. In real time, the pilot can compare – with total confidence – current conditions outside the aircraft with the strategic flight plan, and make decisions accordingly.

Further assisting the pilot is a fully-integrated Automatic Flight Control System (AFCS), consisting of dual auto pilot, dual yaw damper, automatic MACH trim and emergency descent mode (EDM).



Interactive Navigation (INAV™)



SmartView



Cockpit Display of Traffic Information Airborne





The autothrottle function adds a number of benefits during flight including:

- Reduced Crew Workload - Climb, Cruise, Descent, Approach, Maneuvering and Landing
- Better Speed Control in Cruise to Minimize Fuel Burn
- Enhanced Flight Safety
- Stabilized Approach and Landing

Primus Epic 2.0 offers a number of other standard navigation and sensor systems that permit the PC-24 to travel in a variety of different airspaces. These include dual Flight Management Systems (FMS), coupled VNAV, dual WAAS GPS receivers, dual mode S transponder and INAV night mode. Precise and independent navigation capabilities are made available through the use of an Inertial Reference System (IRS).

Standard communication and navigation features include Multi-mode Digital Radio, with support for VDL Mode 2, as well as standard ADS-B Out to comply with the latest mandates and provide an upgrade path to ADS-B In. Complementing ADS-B functionality is the use of Cockpit Display of Traffic Information (CDTI) which overlays ADS-B traffic information on a navigation map during airborne and surface operations.

Finally, a comprehensive standard array of safety systems provide pilots the ability to safely access any destination under a variety of conditions.

These include integrated stall protection, SmartLanding® and SmartRunway®, crew advisory system (CAS) linked electronic checklists.

#### Other Primus Epic Features Include:

- Satellite-Based Augmentation System (SBAS)/Wide Area Augmentation System (WAAS) LPV approach capability
- RDR 2100 weather radar
- RNP 0.3

The best standard aircraft avionics package makes the PC-24 the best equipped aircraft in its class. Honeywell's optional avionics equipment and features expand PC-24 capabilities even further.

#### Available Options:

- 2D Airport Moving Maps / ADS-B in SURF
- ADS-B in CDTI
- Dual Charts
- GoDirect Service:
  - GoDirect Flight Preview
  - Weather information service
  - MyMaintainer
  - Integrated Navigation Data Service
- Internet Connectivity



Enhanced Airport Moving Map

#### The Primus Epic Difference

- Primus Epic 2.0 displays deliver guidance, navigation, communication, engine and flight instrumentation with exceptional clarity.
- Two crystal-clear Primary Flight Displays with SmartView™ Synthetic Vision and two Multifunction Displays with INAV™ help you safely manage the most challenging approach conditions and terrain avoidance maneuvering.
- Unsurpassed integration of aircraft systems, including safety sensors, navigation and terrain database information for increased safety and situational awareness.
- Incorporates the latest Communication Navigation Surveillance/ Air Traffic Management operational requirements such as enhanced surveillance.

**For more information**

about the Pilatus PC-24,  
visit [www.pilatus-aircraft.com](http://www.pilatus-aircraft.com)

**Honeywell Aerospace**

1944 E. Sky Harbor Circle  
Phoenix, AZ 85034  
[aerospace.honeywell.com](http://aerospace.honeywell.com)

A60-1438-000-002 | 05/18  
© 2018 Honeywell International Inc.

**Honeywell**

