

Honeywell

# User Manual

WS3E2WMC/U Wall Module  
WS3E2WMR/U

## Quick Start Guide

Rev.A

### Wall Module Appearance



### Wall Module Operation Guide



Power

• Press to power on/off the product.  
Keep pressing for 3 seconds to enter into economy mode (economy mode activation value must be 3.), and press any key to quit out



Temperature Setting

Under or mode, Press or to set temperature.

Keep pressing and for 5 seconds to lock/unlock the panel keys.



Operating Mode



Heating Cooling Ventilation



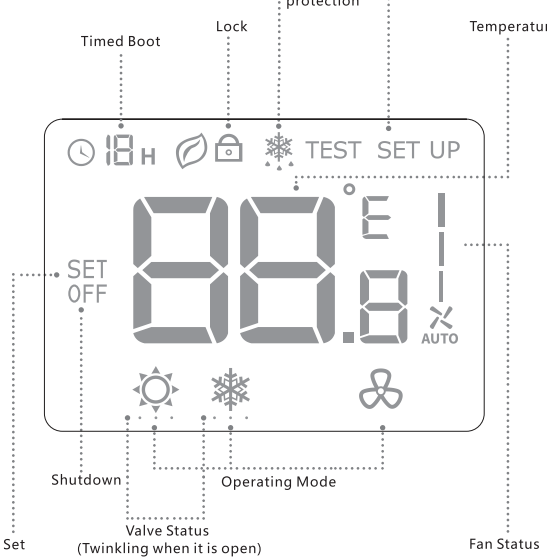
Switch Fan Speed



Auto Low Medium High

Keep pressing for 3 seconds to enter into timed shutdown setting. Press to adjust, then press to confirm.

### Wall Module Display



### Troubleshooting

Abnormal	Solution
Doesn't work	<ul style="list-style-type: none"><li>• Press  to set the operating mode to  (heating mode).</li><li>• To check if the setting temperature is higher than the current room temperature.</li><li>• To check if the valve status indicator is twinkling.</li><li>• 5 minutes later, please check if the heating system is responsive.</li></ul>
Doesn't work	<ul style="list-style-type: none"><li>• Press  to set the operating mode to  (cooling mode).</li><li>• To check if the setting temperature is higher than the current room temperature.</li><li>• To check if the valve status indicator is twinkling.</li><li>• 5 minutes later, please check if the Cooling system is responsive.</li></ul>
Doesn't work	<ul style="list-style-type: none"><li>• To check if the key is locked.</li><li>• To check if the mode is power OFF.</li></ul>
Doesn't work	<ul style="list-style-type: none"><li>• To check if the key is locked</li><li>• To check if the mode is .</li><li>• To check if the mode is power OFF.</li></ul>

### Installation Instructions

The product should be installed by the skilled technical person.

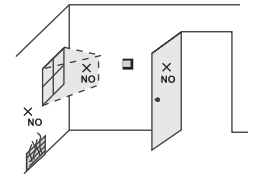
- Please read this manual carefully before installation. Improper installation will lead to damage.
- Please ensure the product's power target to requirements for usage.
- Please do the normal testing for usage after installation.

**Note: Make sure to cut off the power supply before installation, maintain or disassembling to be protected from electric shock at all times.**

The interpretation of this manual is owned by Honeywell Inc. All we reserve the described product's improvements in this manual without the right to prior notice to improve.

#### Installation

- It is suitable for the installation that wall mounted into standard 86 junction box with 75\*75\*50mm.
- The standard height to install this product is 1.5 meter from floor with good ventilation.

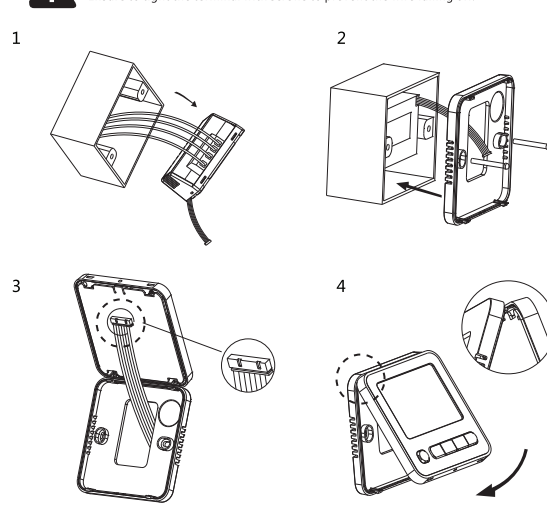


#### Do not install it in the following locations

- Bad ventilation area like the corner, behind the door, etc.
- Close to heating or cooling pipe.
- Close to the area with sunshine or heat sources.
- Other indoor area with too low/high temperature, e.g the wall that contacted with the outside directly.

### Wiring and Installation

Please follow up below drawing to do wiring and ensure the connection is reliable. Ensure to tight the terminal with screws to prevent the wire falling off.





## Honeywell Environmental and Combustion Controls (Tianjin) Co., Ltd.

Address: No. 158 Nanhai Road, Tianjin, 300457, P.R.C

The manual is subject to change without notice.

### Hazardous Substances and Content of the Product:

Parts	Hazardous Substances					
	Pb	Hg	Cd	Cr(VI)	PBB	PBDE
Plastic Shell	○	○	○	○	○	○
Internal Circuit Board	✗	○	○	○	○	○
This form is based on SJ/T11364 rule. ○:The hazardous substances content in the relative component part is within the limitation of GB/T 26572 standard. ✗:There is at least a homogeneous material's hazardous substances content in the relative component part has been beyond the limitation of GB/T 26572 standard.						

Other parts not listed in the table do not contain any restricted substances that exceed the limit requirements.

### WEEE Directive 2012/19 / EC Waste Electrical and Electronic Equipment Directive



At the end of the product life dispose of the packaging and product in a corresponding recycling center. Do not dispose of the unit with the usual domestic refuse. Do not burn the product.

### Terminal Description

Symbol	Description
R	Power:AC24V
C	Common terminal
Vo1	Heating/Cooling valve regulated Output
L	Power:230Vac
FH	High speed fan
FM	Medium speed fan
FL	Low speed fan
SC	Common terminal(Room key card/NTC20K)
RSB/RS	Room key card/NTC20K

Input voltage: 24VAC 50/60Hz

### Notification:

Ensure the physical security of the device, only authorized personnel can access the device and the bus.

Ensure the safety of device deployment, operation and maintenance management.

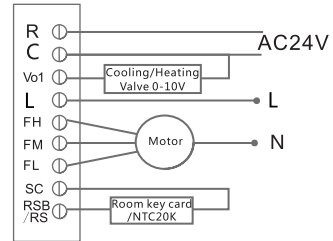
Ensure the device is on the isolated internal network.

For any security risks, please contact <https://www.honeywell.com/en-us/product-security>

### Two-pipe System Application

#### Wiring

Two-wired 24V  
Motorized valve wiring



### Installation Setting



5 seconds

Hold and press “” and “” key at same time for 5s when it is “OFF” mode to enter into the installation setting. (Press “” key to quit out)

Enter into advanced menu to do parameters configuration by keeping pressing mode key and fan speed key for more than 5 seconds in the case of shutdown. The “SET UP” icon and menu code 01-16 will be displayed on the interface. In this status, you can feel free to press up/down to select the menu code, and press mode key to enter into the relative menu interface, then “SET UP” icon will be disappeared but “SET” icon be displayed. At this time, you can press the up/down to set the parameters. Finally, please press mode key to take it effect and then quite out.

If there is no operation within 10 seconds in configuration, the system will quit out automatically without save any setting.

Index	Description	Option
01	Temperature Compensation (default 0°C)	When it is Celsius, the setting range will be from -9°C to 9°C each adjustment range is $\pm 0.5^{\circ}\text{C}$ ; When it is Fahrenheit, the setting range will be from -16°F to 16°F each adjustment range is $\pm 1^{\circ}\text{F}$ ;
02	Fahrenheit /Celsius (default °C)	°C: Celsius, °F: Fahrenheit

Index	Description	Option
03	Home page default temperature display (default 01)	01: The room temperature is displayed by default ( It will display setting temperature when you press up/ down in this state, and quit out after 5 seconds. 02: The setting temperature is displayed by default (It will display room temperature when you press up /down in this state, and quit out after 5 seconds.
04	Fan coil control mode setting after reaching to the setting temperature (default 02)	01: Turn off the fan coil after reaching to the setting temperature 02: Fan coil keep working after reaching to the setting temperature.
05	Frost prevent setting (default 02)	02: Enable frost prevent feature 03: Disable frost prevent feature
06	Setting the upper temperature limit (default 32 °C)	When it is Celsius, the setting range will be from 10°C to 32°C each adjustment range is $\pm 0.5^{\circ}\text{C}$ ; When it is Fahrenheit, the setting range will be from 50°F to 90°F each adjustment range is $\pm 1^{\circ}\text{F}$ ;

Index	Description	Option
07	Set the lower temperature limit (default 10 ° C)	When it is Celsius, the setting range will be from 10°C to 32°C each adjustment range is $\pm 0.5^{\circ}\text{C}$ ; When it is Fahrenheit, the setting range will be from 50°F to 90°F each adjustment range is $\pm 1^{\circ}\text{F}$ ;
08	Operating mode setting (default 05)	01: Only cooling mode is available. 02: Only heating mode is available. 03: Only cooling and ventilation modes are available. 04: Only heating and ventilation modes are available. 05: Cooling, heating and ventilation modes are available.
10	Enable economy mode (default 03)	01: Room key card normally open 02: Room key card normally closed 03: Button
11	Heating temperature setting in economy mode (default is 18°C or 64°F)	Range: 10~21°C each adjustment range is $\pm 0.5^{\circ}\text{C}$ / 50 ~ 70°F each adjustment range is $\pm 1^{\circ}\text{F}$

Index	Description	Option
12	Cooling temperature setting in economy mode (default is 26°C or 79°F)	Range: 22~32°C each adjustment range is $\pm 0.5^{\circ}\text{C}$ / 72 ~ 90°F each adjustment range is $\pm 1^{\circ}\text{F}$
13	Fan speed setting in economy mode (default 02)	01: Low speed 02: Auto speed
14	External / Internal sensor (default 02)	01: External sensor 02: Internal sensor
15	RSB/RS(NTC20K) Access WS3E2WMC/U(default01) WS3E2WMR/U(default02)	01:RSB 02:RS(External sensor enable)
16	Keypad lockout (default04)	01:System button Locked out 02:Fan and System Button Locked out 03:All button locked except power button 04:All buttons art locked