

Honeywell

User Manual

WS8B4WB/U Wall Module

Quick Start Guide

Rev. B

Wall Module Appearance



Wall Module Operation Guide



Power

- Press to switch wall module ON/OFF



Operating Mode



Heating Cooling Automatic Ventilation



Temperature setting

In and mode, press or to set target temperature.

Press and for 5 seconds to lock(unlock) panel button.

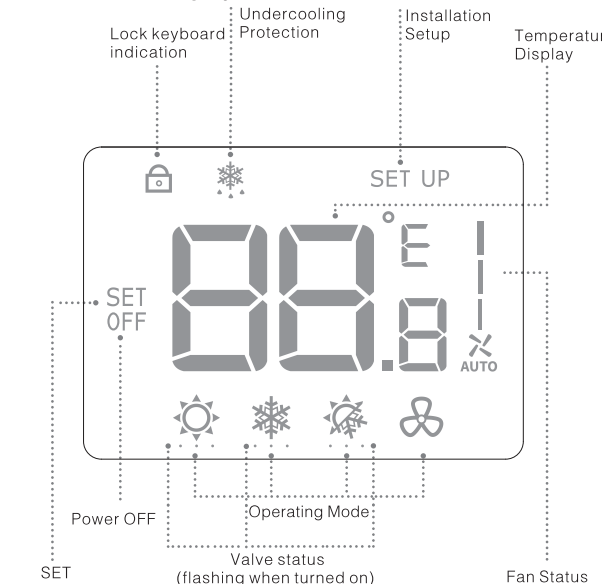


Switch fan speed



Automatic Low Medium High

Wall Module Display



Troubleshooting Tips

Fault Phenomenons	Solutions
Doesn't Work	<ul style="list-style-type: none">Press to set working mode as (heating mode)To check if the setting temperature is higher than current room temperatureTo check if the valve status indicator is flashingTo check if the heating system is responsive after 5 minutes
Doesn't Work	<ul style="list-style-type: none">Press to set working mode as (cooling mode)To check if the setting temperature is lower than current room temperatureTo check if the valve status indicator is flashing after 5 minutesTo check if the cooling system is responsive after 5 minutes
Doesn't Work	<ul style="list-style-type: none">To check if the button is lockedTo check if it is in power OFF mode
Doesn't Work	<ul style="list-style-type: none">To check if the button is lockedTo check if it is in modeTo check if it is in power OFF mode

Installation Instructions



This product must be installed by professionals.

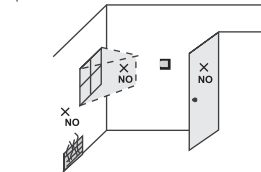
- Please read this manual carefully before installation, improper installation will result in device damage.
- Please check if the wall module power meets the usage requirements.
- Please make a normal test after installation.

Caution: Electric shock is dangerous. Please cut off the power supply before installing, repairing or disassembling.

The right to interpret this manual is owned by Honeywell, Inc. We reserve the right to improve the products described in this manual without prior notice.

Installation Tips

- It's suitable for installation standard 75 x 75 x 50mm wall mounted 86 junction box.
- The wall module should be about 1.5 meters away from the ground and in a well ventilated position.



Do not install in the following locations

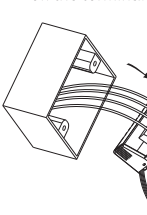
- Unventilated positions such as wall corner and behind the door.
- Near heating or cooling pipe
- Near the sun or heat sources
- Other locations where the indoor temperature is too low or too high, such as a wall that is in direct contact with the outside.

Wiring and installation

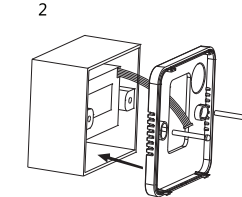


Please operation according to the wiring diagram and confirm the connection is reliable. Be sure to lock the terminal screw: prevent the wire from falling off the terminal.

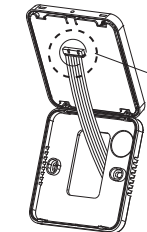
1



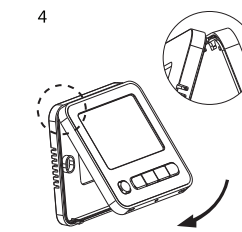
2



3



4



Honeywell

Honeywell Environmental and Combustion Controls (Tianjin)Co.,Ltd
Address:No.158 Nanhai Road,Tianjin,300457,P.R.C

Subject to change without notice

Hazardous Substances and Content of the Product:

Parts	Hazardous substances					
	Pb	Hg	Cd	Cr(VI)	PBB	PBDE
Shell Component	○	○	○	○	○	○
Internal Circuit Board Component	✗	○	○	○	○	○
shell component	○	○	○	○	○	○
Fastener component	○	○	○	○	○	○

This table is based on SJ/T11364.

○:The hazardous substances content in the related part are less than the limit in GB/T 26572 standard.

✗:The hazardous substances content in the related part are more than the limit in GB/T 26572 standard.

Other parts all conform to China RoHS Requirements



WEEE Directive 2012/19/EC Waste Electrical and Electronic Equipment directive

At the end of the product life dispose of the packaging and product in a corresponding recycling centre.Do not dispose of the unit with the usual domestic refuse.Do not burn the product.

Terminal description

Symbol	Description
vC2	Cooling valve OFF(only for four-pipe system)
vo2	Cooling valve ON(only for four-pipe system)
N	Power Neutral wire
vc1	Heating/cooling valve OFF
vo1	Heating/cooling valve ON
L	Power Live wire
FH	High speed fan
FM	Middle speed fan
FL	Low speed fan

Input Voltage: 100~240vac 50/60Hz

Notes

Ensure the physical security of the device, only authorized person can access the device and the bus.

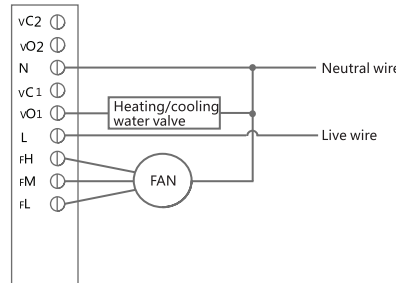
Ensure the safety of equipment deployment, operation and maintenance management.

Ensure that the device is on an isolated internal network.

Two-pipe System Application

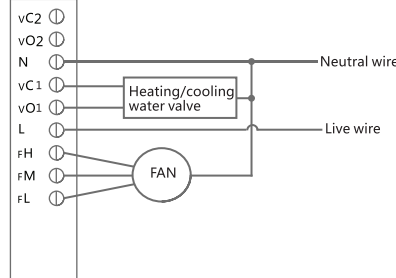
Electric Wiring1

Two-wire FCU
Valve Wiring Diagram



Electric Wiring2

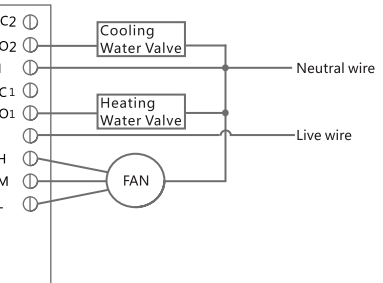
Three-wire FCU
Valve Wiring Diagram



Four-pipe System Application

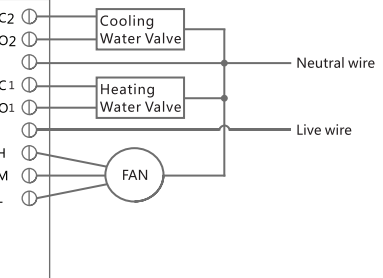
Electric Wiring1

Two-wire FCU
Valve Wiring Diagram



Electric Wiring2

Three-wire FCU
Valve Wiring Diagram



Installation Setting



5 Seconds
In "OFF" mode, Press " " and " " button at the same time more than 5 seconds, you can enter installation setting (press " " button to exit installation setting.)

In power off status, long press mode button and fan speed button for 5s to enter parameter setting interface, now enter advanced setting menu selection, it shows "set up" icon, and menu sequence number is 01-09 in the interface. In this status, you can press up/down button to switch menu sequence number, and press mode button to enter setting interface of the corresponding menu, "set up" icon disappear and "set" icon display. Please press up/down button to set the corresponding function. When the setting is finished, press mode button to exit and save current setting.

When setting parameters, if there is without any operation for 10 seconds, the parameter setting is automatically withdrawn and doesn't save current setting.

Index	Item Description	Option ^ v
01	Compensation temperature (default 0°C)	When display is celsius, setting range will be -9~9°C, each adjustment range is ± 0.5 °C When displayed is Fahrenheit, setting range will be -16-16°F, each adjustment range is ± 1 °F
02	Fahrenheit Celsius Switch (default °C)	°C is Celsius °F is Fahrenheit

Index	Item Description	Option ^ v
03	Home page default display temperature setting (default 01)	01 is the default display room temperature (in this status, it displays setting temperature when you press UP or DOWN button, it will exit after 5 seconds and continue to display room temperature) 02 is the default display setting temperature (in this status, long press the Mode button for 5 seconds to display room temperature, release the button and continue to display setting temperature)
04	When setting temperature is reached, to set the fan coil unit control mode (default 01)	01: Turn off the fan when reaching the setting temperature 02: Continue fan output when reaching the setting temperature
05	Antifreeze function setting (default 02)	02: Turn on Antifreeze function 03: Turn off antifreeze function
06	Setting temperature upper limit (default 30 °C)	When display is Celsius, setting range will be 10-30°C, each adjustment range is ± 0.5 °C When displayed is Fahrenheit, setting range will be 50-86°F, each adjustment range is ± 1 °F

Index	Item Description	Option ^ v
07	Setting temperature lower limit (default 10 °C)	When display is Celsius, setting range will be 10-30 °C, each adjustment range is ± 0.5 °C When displayed is Fahrenheit, setting range will be 50-86°F, each adjustment range is ± 1 °F
08	Setting thermostat to set the working mode (default 06)	01- Individual cooling can only be set as cooling mode 02-Individual heating can only be set as heating mode 03- Cooling + ventilation can only be set as cooling and ventilation mode 04-Heating + ventilation can only be set as heating and ventilation mode 05-Cooling + heating + ventilation can be set as three modes of cooling, heating and ventilation 06- Automatic + cooling + heating + ventilation can be set as all working modes.
09	Setting two-pipe/four-pipe system working mode(default 04)	02-Working in two-pipe system mode (In this option, the setting range of index 08 is 01-05) 04-Working in four-pipe system mode