

Honeywell

User Manual

WS9x2 Series Wall Module

Quick Start Guide

Rev. B

Wall Module Appearance



Wall Module Operation Guide

Power

Press to power on/off the product. Keeping pressing for 3s (only valid when the value is 3) or be linking with remote room key card to enter into economy mode , press any key to exist it.

Operating Mode

Heating Cooling Ventilation

Temperature Setting

Under , mode, Press or to set temperature. Press and at same time for 5s to lock/unlock keys as per the setting rules.

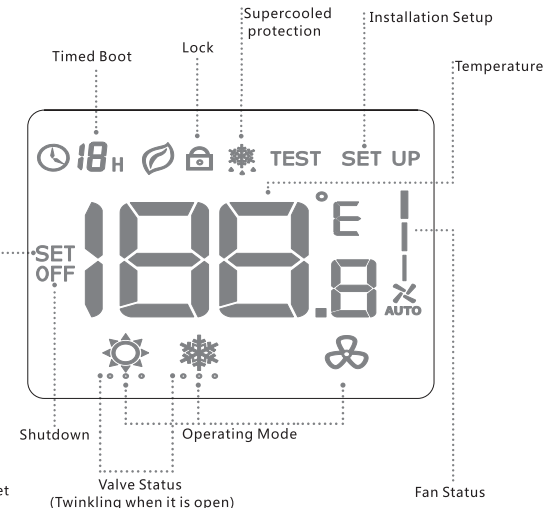
Press and to check the internet status. "BB" in front is IP address, the rest "B" is L (internet connected) or N (internet disconnected).

Switch Fan Speed

Auto Low Medium High

Keep pressing for 3 seconds to enter into timed shutdown setting. Press to adjust, then press to confirm.

Wall Module Display



Troubleshooting

Abnormal	Solution
Doesn't work	<ul style="list-style-type: none">Press to set the operating mode to (heating mode).To check if the setting temperature is higher than the current room temperature.To check if the valve status indicator is twinkling.5 minutes later, please check if the heating system is responsive.
Doesn't work	<ul style="list-style-type: none">Press to set the operating mode to (cooling mode).To check if the setting temperature is higher than the current room temperature.To check if the valve status indicator is twinkling.5 minutes later, please check if the Cooling system is responsive.
Doesn't work	<ul style="list-style-type: none">To check if the key is locked.To check if the mode is power OFF.
Doesn't work	<ul style="list-style-type: none">To check if the key is lockedTo check if the mode is .To check if the mode is power OFF.

Installation Instructions

The product should be installed by the skilled technical person.

Note: Make sure to cut off the power supply before installation, maintain or disassembling to be protected from electric shock at all times.

Please read this manual carefully before installation. Improper installation will lead to damage.

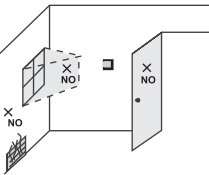
Please ensure the product's power target to requirements for usage.

Please do the normal testing for usage after installation.

The interpretation of this manual is owned by Honeywell Inc. All we reserve the described product's improvements in this manual without the right to prior notice to improve.

Installation

- It is suitable for the installation that wall mounted into standard 86 junction box with 75*75*50mm.
- The standard height to install this product is 1.5 meter from floor with good ventilation.

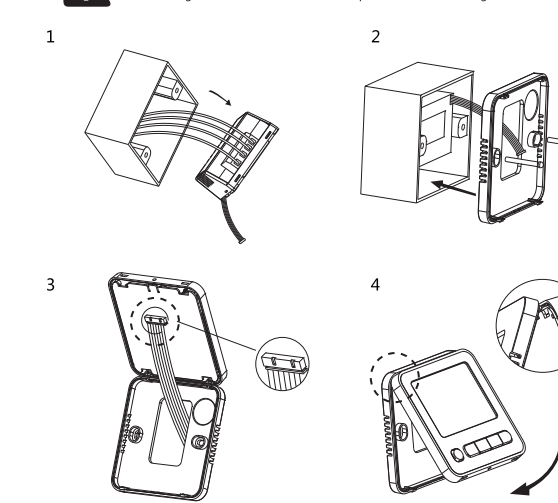


Do not install it in the following locations

- Bad ventilation area like the corner, behind the door, etc.
- Close to heating or cooling pipe.
- Close to the area with sunshine or heat sources.
- Other indoor area with too low/high temperature, e.g the wall that contacted with the outside directly.

Wiring and Installation

Please follow up below drawing to do wiring and ensure the connection is reliable. Ensure to tight the terminal with screws to prevent the wire falling off.



Hazardous Substances and Content of the Product:

Parts	Hazardous Substances					
	Pb	Hg	Cd	Cr(VI)	PBB	PBDE
Plastic Shell	○	○	○	○	○	○
Internal Circuit Board	×	○	○	○	○	○

This form is based on SJ/T11364 rule.

○:The hazardous substances content in the relative component part is within the limitation of GB/T 26572 standard.

×:There is at least a homogeneous material's hazardous substances content in the relative component part has been beyond the limitation of GB/T 26572 standard.

Other parts not listed in the table do not contain any restricted substances that exceed the limit requirements.

WEEE Directive 2012/19 / EC Waste Electrical and Electronic Equipment Directive

At the end of the product life dispose of the packaging and product in a corresponding recycling center. Do not dispose of the unit with the usual domestic refuse. Do not burn the product.



Honeywell Environmental and Combustion Controls (Tianjin) Co., Ltd.

Address: No. 158 Nanhai Road, Tianjin, 300457, P.R.C
The manual is subject to change without notice.

Terminal Description

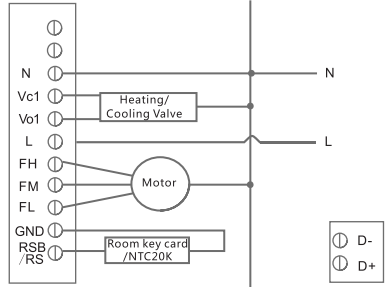
Symbol	Description
N	Neutral wire
vC	Heating/Cooling valve off
vO	Heating/Cooling valve on
L	Live wire
FH	High speed fan
FM	Medium speed fan
FL	Low speed fan
GND	
RSB/RS	Room key card/NTC20K
D+	Modbus 485+
D-	Modbus 485-

Input voltage: 100~240VAC 50/60Hz (24VAC 50/60Hz)

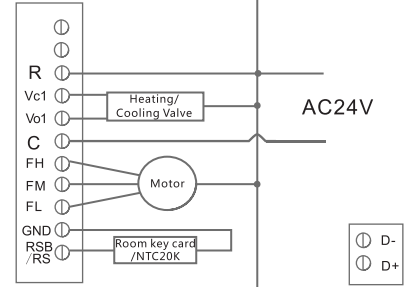
Notification:
Ensure the physical security of the device, only authorized personnel can access the device and the bus.
Ensure the safety of device deployment, operation and maintenance management.
Ensure the device is on the isolated internal network.
For any security risks, please contact <https://www.honeywell.com/en-us/product-security>

Two-pipe System Application

Wiring 1
Two-wired 220V
Motorized valve wiring



Wiring 2
Two-wired 24V
Motorized valve wiring



Installation Setting



Hold and press " " and " " key at same time for 5s when it is "OFF" mode to enter into the installation setting. (Press " " key to quit out)

In power off, holding the mode and fan speed key simultaneously for 5 seconds to enter the parameter setting interface. the "SET UP" icon is displayed on the screen, and the item number 00-17 can be selectable. Press the up and down keys to switch the menu number. Press the mode key to enter the interface of the corresponding item, the "SET UP" icon disappears and the "SET" icon displayed. Then you can press the up and down keys to set the corresponding function. Press the mode key after the setting is completed to exit and save the current settings.

During setting, if no button is pressed for 10 seconds, the parameter setting will be automatically exited without saving. Only when the mode button is pressed to confirm, it will exit and be automatically saved.

Index	Description	Option
00	Modbus address	1-64 default 1
01	Temperature Compensation (default 0°C)	When it is Celsius, the setting range will be from -2°C to 2°C with accuracy 0.5°C ; When it is Fahrenheit, the setting range will be from -4°F to 4°F with accuracy 1°F.
02	Fahrenheit /Celsius (default °C)	°C: Celsius, °F: Fahrenheit

Index	Description	Option
03	Home page default temperature display (default 01)	01: The room temperature is displayed by default (It will display setting temperature when you press up/down in this state, and quit out after 5 seconds). 02: The setting temperature is displayed by default (It will display room temperature when you press up/down in this state, and quit out after 5 seconds).
04	Fan coil control mode setting after reaching to the setting temperature (default 01)	01: Turn off the fan coil after reaching to the setting temperature 02: Fan coil keep working after reaching to the setting temperature.
05	Frost prevent setting (default 02)	02: Enable frost prevent feature 03: Disable frost prevent feature
06	Setting the upper temperature limit (default 32 °C)	When it is Celsius, the setting range will be from 10°C to 32°C with accuracy 0.5 °C; When it is Fahrenheit, the setting range will be from 50°F to 90°F with accuracy 1°F;

Index	Description	Option
07	Set the lower temperature limit (default 10 °C)	When it is Celsius, the setting range will be from 10°C to 32°C with accuracy 0.5°C ; When it is Fahrenheit, the setting range will be from 50°F to 90°F with accuracy 1°F.
08	Operating mode setting (default 05)	01: Only cooling mode is available. 02: Only heating mode is available. 03: Only cooling and ventilation modes are available. 04: Only heating and ventilation modes are available. 05: Cooling, heating and ventilation modes are available.
10	Enable economy mode (default 03)	01: Room key card normally open 02: Room key card normally closed 03: Button
11	Heating temperature setting in economy mode (default is 18°C or 64°F)	Range: 10~21°C with accuracy 0.5°C / 50~70°F with accuracy 1°F

Index	Description	Option
12	Cooling temperature setting in economy mode (default is 26°C or 79°F)	Range:22~32°C with accuracy 0.5°C/72~90°F with accuracy1°F
13	Fan speed setting in economy mode (default 02)	01: Low speed 02: Auto speed
14	External / Internal sensor (default 02)	01: External sensor 02: Internal sensor
15	RSB/RS(NTC20K) Access	01:RSB(Default) 02:RS(External sensor enable)
16	Modbus Baud rate (default02)	03 baud rate 4800 02 baud rate 9600 (Default) 01 baud rate 19200 (only for models with H) 00 baud rate 38400 (only for models with H)
17	Keypad lockout (default04)	01 System button Locked out 02 Fan and System Button Locked out 03 All button locked except power button 04 All buttons are locked